

# ZECO

2.0 MULTIMEDIA SPEAKER SYSTEM

ZE3102DJ  
BL886U

## USER MANUAL

Thank you for purchasing this product. We kindly ask you to read all the instructions and save this instruction manual for future reference.



### با ضمانت گاندو سرویس

رکورد دار دریافت تندیس حمایت از حقوق مصرف کننده برای  
هشتمین سال پیاپی در صنعت لوازم خانگی، صوت و تصویر ایران



### Operation Explanation:

#### Specifications :

Output Power: 200W x 2 (RMS)  
Drive Units: Woofer 10" x 6 + 3" Tweeter x 4  
Frequency Response: 50Hz-20KHz  
Separation: ≥40dB  
S /N: ≥60dB

#### Features:

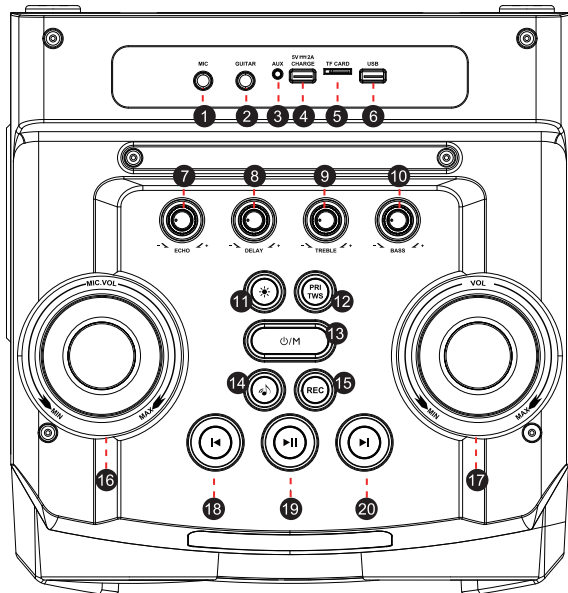
- Quality 2.0 speaker system with built-in amplifier
- Full audio spectrum performances, ideal for your favourite entertainment from Mp3, Mp4, CD/DVD movies and digital playbacks
- Specially designed woofer cabinet for bass and resolution
- Comes with remote control and 3.5 stereo connection

#### Package contents:

Subwoofer ----- 1 pc  
Satellite ----- 1 pc  
Microphone ----- 1 pc  
Audio input cord ----- 1 pc  
FM antenna ----- 1 pc  
Remote control ----- 1 pc  
User manual ----- 1 pc  
Warranty card ----- 1 pc

NO.1

### Front panel



1. MIC: Microphone slot.
2. GUITAR: Guitar slot.
3. AUX: Input Connect to sound sources such as computer, CD player, Mp3, etc.
4. 5V==2A CHARGE: USB port ,Charging output DC 5V ==2A.
5. TF CARD: TF CARD jack.
6. USB: USB Slot.
7. - ECHO + : Rotating for microphone echo +/-.  
(No reverberation in USB/OPT/COA/TF/REC mode).
8. - DELAY + : Rotating for Adjust the DELAY.
9. -TREBLE + : Rotate for turning up/down treble.

NO.2

10. - BASS + : Rotating for Adjust the Bass.

11. \* : Change RGB light Mode.Short press RGB light mode, 6 light effect modes, long press to turn on or off the light.

12. PRI/TWS: Press to open or close the microphone. Hold down to open or close TWS.In TWS mode, echo is useless when play Mic.

13. O/M : Press the "O/M"key to switch between BT-FM-OPT-COA-TF-AUX-USB (When no USB/TF is plugged in,Switch only on BT-FM-OPT-COA-AUX, USB /TF card have insertion priority).

long press to power on, in the power on state, long press to power off.

14. ♪ : Press to change between original and accompaniment for kar karaoke.

15. REC: short-press for recording, double-click for recording to play back, and long-press to delete the recording.

16. - MIC VOLUME + : Rotating for microphone volume+/-.

17. - VOLUME + : Rotate for turning up/down Volume.

18. Previous key

FM mode: Press the previous radio station. Press and hold the current frequency band for 3 seconds to search up semi-automatically.

In USB/TF mode: short press the previous track; Long press to fast backward,

In BT/ AUX mode: No function.

19. Play/pause button

In AUX mode: Short press to mute/unmute.

In BT/USB/TF mode : Short press to pause/play. long press the BT function can be forced to disconnect.

FM mode: Press and hold to automatically search for a radio station. Save all stations found after preview.Press the key to mute or unmute.

20. Next key:

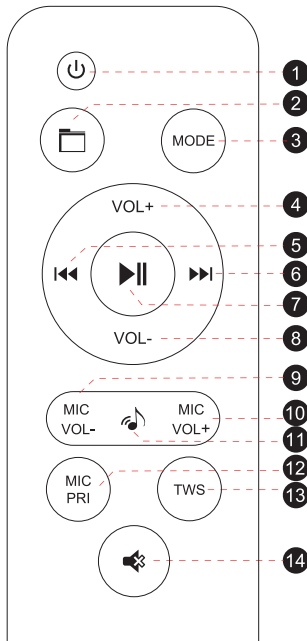
FM mode: Press a radio station; Hold down the current frequency band for 3 seconds to search semi-automatically.

In USB/TF mode: short press the previous track; Long press to fast forward,

In BT/AUX mode: has no function.

NO.3

## How to use the remote control



1. Power ON or Standby modes.
2. In USB/TF mode, previous folder, next folder.
3. MODE: Press the MODE key to switch between BT-FM-OPT-COA-TF-AUX-USB (When no USB/TF is plugged in. Switch only on BT-FM-OPT-COA-AUX, USB /TF card have insertion priority).
4. Volume up.
5. Previous key  
FM mode: Press the previous radio station. Press and hold the current frequency band for 3 seconds to search up semi-automatically.

NO.4

In USB/TF mode: short press the previous track; Long press to fast backward, In BT/ AUX mode: No function.

6. Next key

FM mode: Press a radio station; Hold down the current frequency band for 3 seconds to search semi-automatically.

In USB/TF mode: short press the previous track; Long press to fast forward, In BT/AUX mode: has no function.

7. Play/pause button

In AUX mode: Short press to mute/unmute.

In BT/USB/TF mode: Short press to pause/play. long press the BT function can be forced to disconnect.

FM mode: Press and hold to automatically search for a radio station. Save all stations found after preview. Press the key to mute or unmute.

8. Volume down.

9. MIC VOL- : To decrease the MIC.

10. MIC VOL+ : To increase the MIC.

11. 🎤 : Press to change between original and accompaniment for kar karaoke.

12. MIC/PRI: Short press to turn on or off the microphone priority loop.

13. TWS: Short Press to open or close the TWS function. When TWS is paired, press this key to disconnect the TWS connection.

14. Tap to mute or unmute.

## BT Pairing Method

Press "MODE" button on the remote or speaker top panel "📶" goes BT input mode, and the BT light starts to blink to search for BT devices. Turn on your mobile BT device and search for the device name "Zeco BL886U" to match them nicely. When you successfully pair, your phone is connected to the speaker system, and display the BT icon lights up. When the phone music starts to play, the display the BT icon lights up. You can perform functions such as PLAY/PAUSE on the top panel. In BT mode, when connecting the mobile phone, long press the "▶||" button, the BT function can be forced to disconnect.

NO.5

## عملکرد اتصال BT

دکمه ی MODE را از روی ریموت کنترل یا پنل فشار دهید، دستگاه به حالت اتصال BT میرود. چراغ بلوتوث

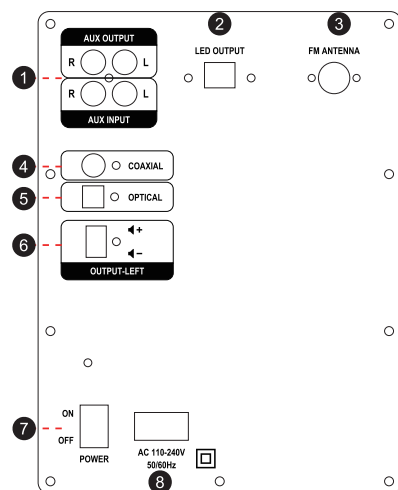
برای جستجوی BT شروع به چشمک زدن می کند. بلوتوث تلفن همراه خود را روشن کنید و نام BT

دستگاه Zeco BL886U را برای اتصال جستجو کنید. زمانی که اتصال با موفقیت انجام شد تلفن همراه شما

به اسپیکر متصل شده است. چراغ نمایشگر BT روشن می شود. میتوانید عملکرد های Play/Pause را توسط پنل BT

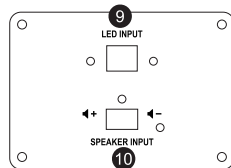
اسپیکر انجام دهید. در حالت هنگام اتصال تلفن همراه با فشردن طولانی دکمه ▶|| عملکرد BT را میتوان قطع کرد.

## Subwoofer rear panel



1. Left/Right AUX Output  
Left/Right AUX input
2. LED Output
3. FM Antenna
4. Coaxial Input
5. Optical Input

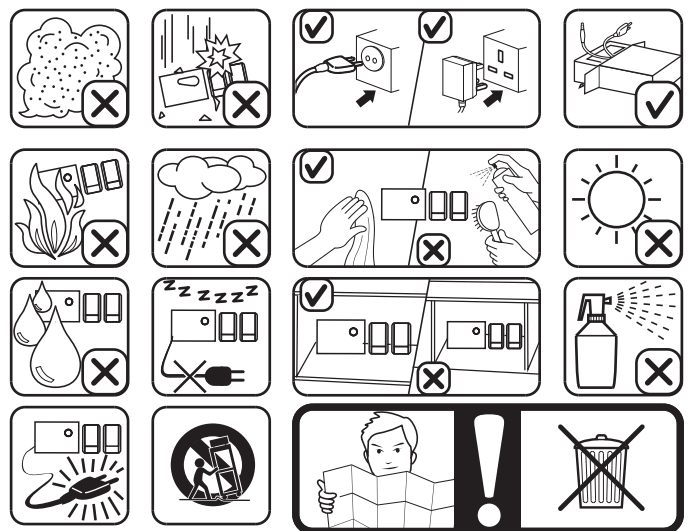
## Satellite rear panel



6. Output-Left +/-
7. POWER ON/OFF
8. AC power cord
9. LED Input
10. Speaker Input +/-

NO.6

## In use please pay attention to the following items:



\*if the remote control cannot function, it is because the battery of remote control has been used up. thank you.

NO.7